

FEEL THE FLOW

Urodynamics made easy with MMT





Uromic Jive

System which always adapts to your daily needs.

- Compact 5 channel system for complex functional diagnostics.
- Height adjustable stand.
- Device chassis equipped with braked wheels allows easy movement of the device, which will also facilitate the handrails.
- Small footprint minimises use of space in clinic and storage.
- Infection control friendly keyboard.
- Unique wireless uroflowmeter connection at 866 MHz ensures the stability and no signal dropout.

Various options upon customer's choice:

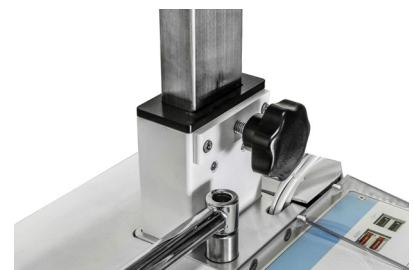
- wired/wireless keyboard with touchpad connection,
- wide shelf for standard or medical keyboard and mouse,
- widescreen, standard or touch monitor.



Version with a shelf with medical waterproof white mouse and keyboard.



Version with a shelf with standard mouse and keyboard.



Easy to release/fix the height with one screw.

Accessories for Uromic

All the urodynamic systems
are compatible with a wide
range of accessories.

Uroflowmetry

Flow meters utilise wired/wireless weight cell transducer technology
to transform urine flow from the patient into a graphical format.

Cable length up to
6 meters



Unique wireless technology
at 866 MHz

- massively improved range between flow rate and printer compared to Bluetooth (BT)
- walls and doors will not be an obstacle unlike with BT
- working distance up to 50 m
- hugely improved stability compared to BT, no signal dropout

Incredible
battery
performance



- up to 2 years between changes
- no regular/daily charging of flow meter base meaning no missed clinics due to flat batteries

Two types of stands for flow meters – both of them are height adjustable, easy to alter the height.



DanFlow
type



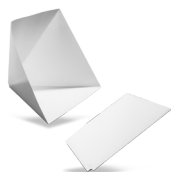
Economy
type



The flexibility of the stands allow them
comfortably to slide underneath
a commode for kids and female patients.



- reusable funnel
- 95° resistant



- disposable paper funnel



- reusable stainless steel container
- measuring scale (1,500 ml)
- sterilizable in autoclave

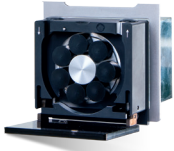


- plastic single-use containers with or without measuring scale (1,000 ml)

**MMT accessories
for uroflowmetry
meet the high
demands of
sterile hospital
environment and
comfortable
handling during the
examination.**

Cystometry

MMT pump and infusion sensor ensure precise volume filling.



- accurate 7 roller pump
- cysto/profilometric pump



- infusion sensor
- additional pump volume monitoring

Accessories for Uromic

Profilometry

Unique design and wide range of accessories allow comfortable use for measuring the urethral profile.



- unique magnetic puller
- customizable speed



- resterizable catheter holder
- 2 different sizes available



- puller with fixation arm on a stand
- easy to position



- flexible arm used with a universal Manfrotto holder



- flexible arm used with a Euro listel holder

The flexible arm is easily manoeuvred into correct position.

VLPP

Valsava Leak Pressure Point

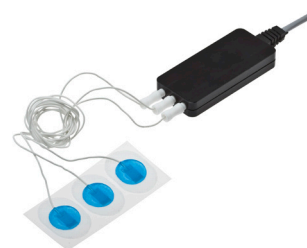
Flexible camera from MMT allows easy visualisation of urethral leaks.



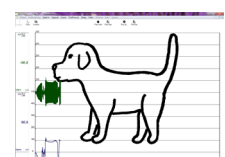
- flexible camera with the holder and the inbuilt light
- compatible with universal Manfrotto holder or Euro listel holder

EMG Biofeedback

EMG curve is smooth and precise results thanks to external pre-amplifier.



- EMG pre-amplifier with electrodes
- compatible with surface electrodes



- Biofeedback image animation used in pediatric examination helps to communicate.

UROMIC software

- Easy to install
- Multiple language versions
- DICOM
- Predefined protocols / customized protocols
- Software for anorectal manometry
- Methods conform to ICS standards
- Nomograms
- Online remote service support

Basic features of urodynamic systems UROMIC	Uromic Tango 16	Uromic QuickStep	Uromic Samba	Uromic Jive	Uromic Blues	Uromic Blues AM
Measuring channels	16	8	8	5	5	8
Wireless connection	•	•	•	•	—	—
Uroflowmetry	•	•	•	•	—	—
Filling cystometry	•	•	•	•	•	—
VLPP	•	•	•	•	•	—
Profilometry (UPP)	•	•	•	•	•	•
Pressure Flow study	•	•	•	•	•	—
EMG, Biofeedback	•	•	•	•	•	•
Videourodynamics	•	•	•	—	—	—
Ultrasound module	•	•	•	—	—	—
Anorectal manometry	•	•	•	•	•	•

• option • standard — not available