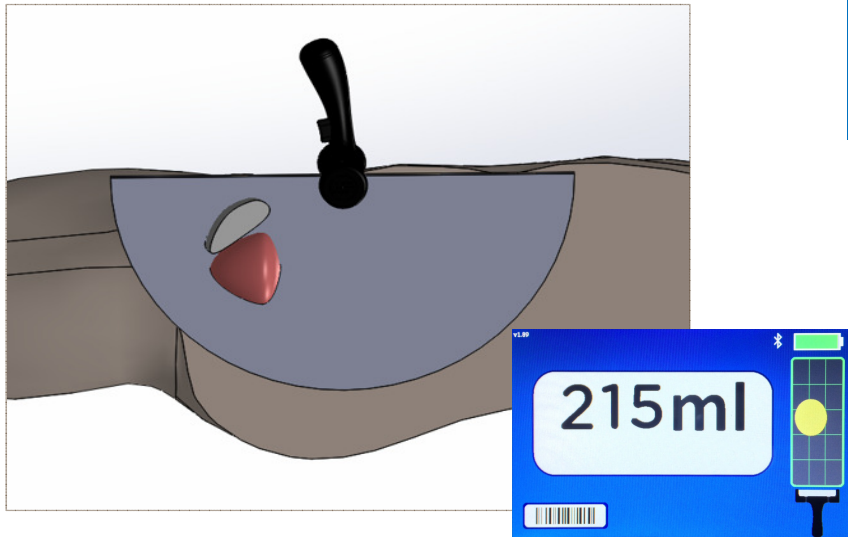


The BBS Revolution™ *difference...*

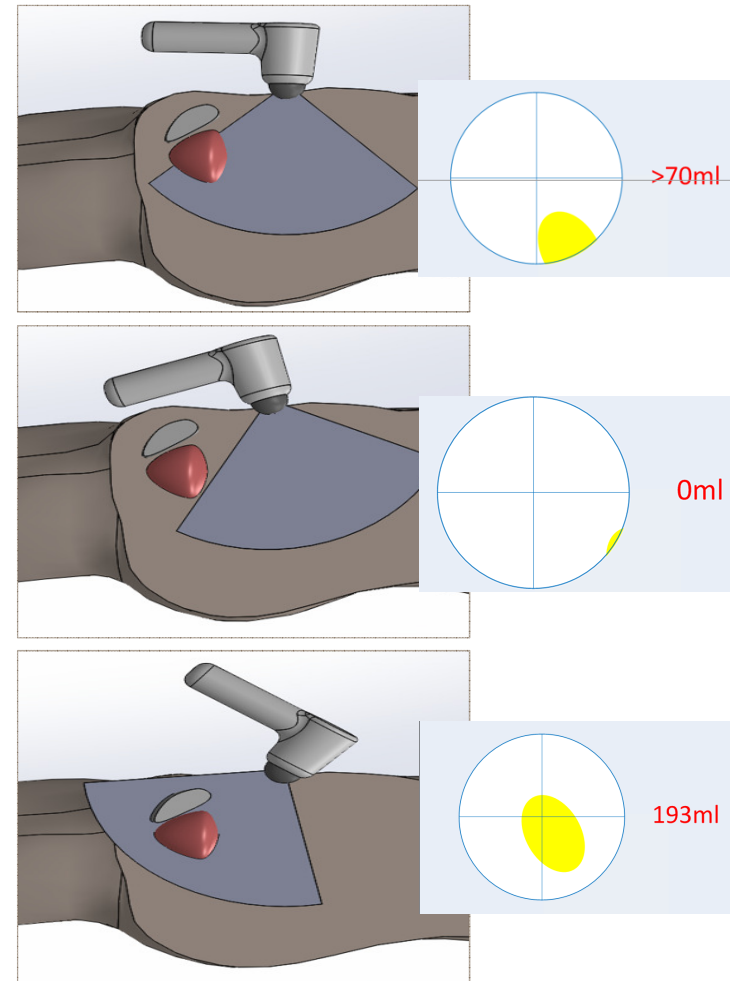
BBS Revolution™

- 8 transducers
- 180° field of view



All other bladder scanners

- 1 transducer
- 120° field of view



The BBS Revolution™ *difference...*

All **single transducer**, conical probe bladder scanners have the best resolution in the center of the cone which requires the user to do a bit of “hunting” for the bladder before being able to capture a volume.

The **BBS Revolution™** wide angle scan has a cylindrical field of view with uniform resolution across the face of the probe. This eliminates the need to “aim” the probe.

Some bladder scanners include a real time ultrasound display as an aiming aid. The inherent risk is since most bladder scanning is done by nursing staff that are not trained sonographers, they may not be comfortable making decisions based upon an ultrasound image. **For instance, what does an empty bladder look like in an ultrasound image?**

